



# DELAWARE MONTHLY HIV/AIDS REPORT

Delaware data through 04/30/2016

	Living <sup>1</sup> w/ HIV		Living w/ AIDS		Living w/ HIV/AIDS		Cumulative <sup>2</sup> HIV		Cumulative AIDS		Cumulative HIV/AIDS	
Exposure Category	Number	Percent	Number	Percent	Number	Percent	Number	Percent	Number	Percent	Number	Percent
Gender												
Male	956	70.2%	1474	68.5%	2430	69.2%	1008	69.1%	3230	72.4%	4238	71.6%
Female	405	29.8%	678	31.5%	1083	30.8%	450	30.9%	1234	27.6%	1684	28.4%
Total	1361	100%	2152	100%	3513	100%	1458	100%	4464	100%	5922	100%
Residence												
Kent County	175	12.9%	297	13.8%	472	13.4%	165	11.3%	483	10.8%	648	10.9%
New Castle County	894	65.7%	1418	65.9%	2312	65.8%	1033	70.9%	3339	74.8%	4372	73.8%
Wilmington Metro Area	500	36.7%	878	40.8%	1378	39.2%	605	41.5%	2192	49.1%	2797	47.2%
Outside Wilmington Metro Area	394	28.9%	540	25.1%	934	26.6%	428	29.4%	1147	25.7%	1575	26.6%
Sussex County	286	21.0%	432	20.1%	718	20.4%	260	17.8%	642	14.4%	902	15.2%
Unknown	6	0.4%	5	0.2%	11	0.3%	0	0.0%	0	0.0%	0	0.0%
Total	1361	100%	2152	100%	3513	100%	1458	100%	4464	100%	5922	100%
Age at Diagnoses												
<13	14	1.0%	20	0.9%	HIV and AIDS diagnoses ages represent two different disease states and cannot be combined	10	0.7%	28	0.6%	HIV and AIDS diagnoses ages represent two different disease states and cannot be combined		
13-19	94	6.9%	25	1.2%		92	6.3%	30	0.7%			
20-29	410	30.1%	335	15.6%		419	28.7%	598	13.4%			
30-39	415	30.5%	735	34.2%		435	29.8%	1665	37.3%			
40-49	278	20.4%	709	32.9%		324	22.2%	1432	32.1%			
50+	150	11.0%	328	15.2%		178	12.2%	711	15.9%			
Total	1361	100%	2152	100%		1458	100%	4464	100%			
Race/Ethnicity												
Hispanic - All races	102	7.5%	143	6.6%	245	7.0%	98	6.7%	245	5.5%	343	5.8%
White	452	33.2%	633	29.4%	1085	30.9%	443	30.4%	1209	27.1%	1652	27.9%
Black	773	56.8%	1332	61.9%	2105	59.9%	892	61.2%	2967	66.5%	3859	65.2%
Other <sup>3</sup>	34	2.5%	44	2.0%	78	2.2%	25	1.7%	43	1.0%	68	1.1%
Total	1361	100%	2152	100%	3513	100%	1458	100%	4464	100%	5922	100%
Mode of Exposure in Adult Cases												
MSM	565	41.5%	719	33.4%	1284	36.5%	552	37.9%	1381	30.9%	1933	32.6%
IDU	181	13.3%	483	22.4%	664	18.9%	265	18.2%	1561	35.0%	1826	30.8%
MSM/IDU	35	2.6%	99	4.6%	134	3.8%	45	3.1%	234	5.2%	279	4.7%
Heterosexual contact w/IDU	50	3.7%	157	7.3%	207	5.9%	57	3.9%	366	8.2%	423	7.1%
Heterosexual contact	416	30.6%	567	26.3%	983	28.0%	450	30.9%	756	16.9%	1206	20.4%
Transfusion/transplant recipient	1	0.1%	4	0.2%	5	0.1%	1	0.1%	18	0.4%	19	0.3%
Risk not reported/other	99	7.3%	87	4.0%	186	5.3%	78	5.3%	102	2.3%	180	3.0%
Pediatric Exposure	14	1.0%	36	1.7%	50	1.4%	10	0.7%	46	1.0%	56	0.9%
Total	1361	100%	2152	100%	3513	100%	1458	100%	4464	100%	5922	100%
Mode of Exposure in Pediatric Cases												
Mother with/at risk for infection	9	64.3%	29	80.6%	38	76.0%	8	80.0%	41	89.1%	49	87.5%
Receipt of blood transfusion or tissue	0	0.0%	0	0.0%	0	0.0%	0	0.0%	1	2.2%	1	1.8%
Hemophilia/Coagulation Disorder	0	0.0%	1	2.8%	1	2.0%	0	0.0%	1	2.2%	1	1.8%
Other/risk not reported	5	35.7%	6	16.7%	11	22.0%	2	20.0%	3	6.5%	5	8.9%
Total	14	100%	36	100%	50	100%	10	100%	46	100%	56	100%

<sup>1</sup> "Living" data includes anyone currently living in DE with HIV/AIDS.

<sup>2</sup> Cumulative data includes only those people who were residents of DE at time of diagnosis.

<sup>3</sup> Other includes Asian, Pacific Islander, American Indian, Alaskan Native or Multi-racial.

\* Pediatric cases are individuals <13 years of age.

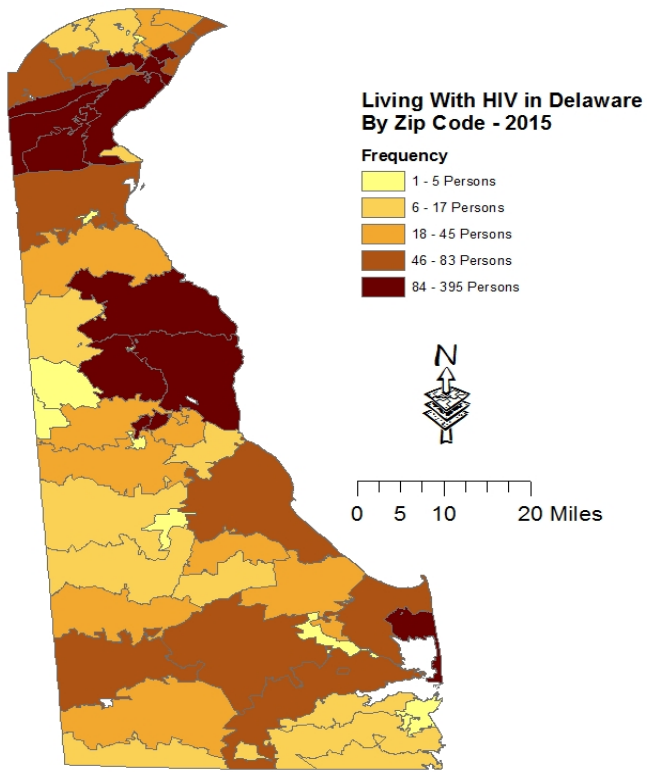
## Eight Year History of New Infections (DE Cases)

2009	2010	2011	2012	2013	2014	2015	2016
153	131	109	137	115	114	109	38
*So Far This Year							

14.89% of HIV/AIDS diagnosed persons living in DE were diagnosed in another state and moved to DE after Diagnoses

Note: AIDS cases have been reported in Delaware since 1983, HIV cases since July 2001.

New Infection = Year in which HIV infection was first diagnosed



Source: Enhanced HIV/AIDS Reporting System (eHARS)

JED: 08/27/2015